

TonoVue-P

Automatic Non-Contact Tonometer
with pachymetry

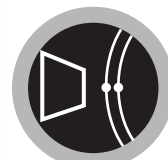
TonoVue-P integrates intraocular pressure (IOP) and central corneal thickness (CCT) measurements in one unit. Combining the technologies of Scheimpflug camera, soft air puffing, and 3D auto tracking. TonoVue-P offers the measurement results of CCT, IOP, and compensated IOP with reliable accuracy.



Soft puffing



3D tracking



Pachymeter



Auto
measurement



Touch screen



Auto cutter

CE
0120

Auto CCT measurement

CCT is useful for LASIK surgery. Also, CCT is an important parameter which is used to compensate for IOP which is the important index for the detection of glaucoma. Taking the technology of Scheimpflug camera and 3D auto tracking, TonoVue-P provides safe, easy and accurate measurement on CCT



Fully automatic just one touch

With the fully automatic 3D tracking, multiple IOP measurements can be done by touching the soft key of “start”. The measurements can be printed out automatically



TonoVue-P

Model:
Patient ID:
Operator ID:
No. :
Time:

IOP	mmHg	
	Right	Left
	15	17
	16	16
	15	16
Avg.	15.3	16.3
C. IOP	16.3	15.3

Crystalvue Medical Corp.

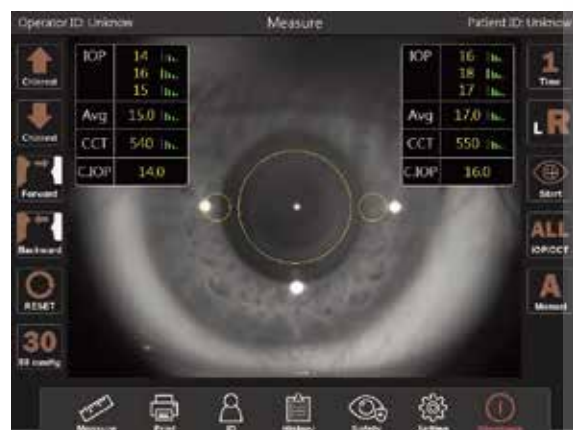
Soft air puff and quick exam time

The intelligent software controls the amount of air required for each individual eye. It achieves the softer and quieter air puff which makes patients feeling comfortable. With the intelligent 3D tracking, the measurements are done extremely fast.



Large 10.1" LCD touch screen

The 10.1" LCD touch screen makes it easy to control all of the operating procedures and settings. The large touch screen also makes the access of patients' data base easy.



Connectivity

TonoVue-P has built in the software to manage the data base of patients. This software enables easy and fast access to patient data through touch screen, printer, USB or RS232.



TonoVue-P Specifications

Model	TonoVue-P
Central Corneal Thickness	
Measurement range	0.4 – 0.80 mm
Light source	Blue LED
Intraocular Pressure	
Measurement range	1– 60 mmHg
Measurement range setting	Auto/ 30 mmHg/ 60 mmHg
Measurement principle	Air puff method
Display units	mmHg/hpa
Working distance	11 mm
Alignment	Fully automatic 3D tracking
Chinrest	motorized
Display	10.1" LCD touch screen
Printer	Thermal printer with auto cutter
Interface	USB / RS232
Power supply	AC100V to 240V, 50/60Hz, auto selected
Operating Environment	Temperature: 10°C to 35°C Humidity: 30% to 90%
Dimensions (WxDxH)	280 mm x 485 mm x 480 mm
Weight	17 Kg