



MDT (est. 1998) is a reputable manufacturer and supplier of the ophthalmic devices, accessories and consumables (including: BioGlo - Fluorescein Sodium Ophthalmic Strips and TearFlo - Schirmer's Test Strips). Thanks to our experience and sustainable development, we are able to meet growing requirements by offering a wide range of functional products for Ophthalmologists.

We manufacture ophthalmic surgical tables, operator's chairs, ophthalmic units, electrical ophthalmic tables, as well as devices used for diagnostics and treatment of strabismus, which are proudly CE & 'made in EU' marked.

Thanks to our commitment to Ophthalmology, excellent Business Partners, a long-lasting presence in the global market, continuous investments in research and development, as well as the team of devoted employees, we are able to meet growing requirements by offering a wide range of high-quality products and services.

We are proud of our Service Engineers and Business Partners who provide customers with an outstanding level of technical support, both at the stage of equipment installation and in case of any issues appearing during product life-time. The satisfaction of the customers is of utmost importance to us, therefore we take into consideration your advice and opinions, while striving to meet the challenges and expectations we encounter.

We welcome you to acquaint yourselves with our product portfolio. In case of any questions we are at your disposal.

MDT Ophthalmic Equipment Manufacturer.

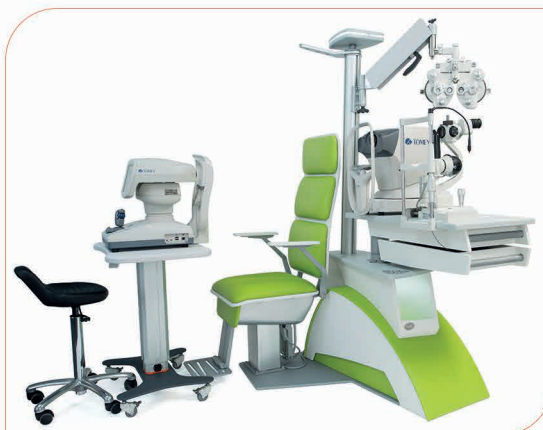


Ophthalmic Unit

SMART Plus

Ideal solution for the most demanding





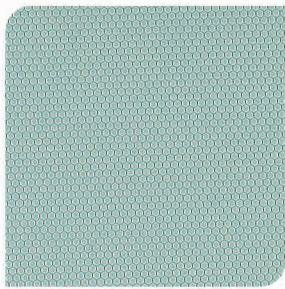
- Ergonomic and smart design
- Two instruments translating table-top with the electrical up / down adjustment
- Electrically elevated / reclined patient chair
- Chair rotatable by 90° giving possibility to examine patient with additional diagnostic devices from the side
- Practical control panel and easy accessed accessory drawer
- Simple connection of different types of slit lamps: 6V,12V,18V
- Aluminum column with illumination lamp, ophthalmoscope / retinoscope rack and projector support
- Wide selection of upholstery and chassis colours
- Spring phoropter arm (optional)
- CBS-1000 Control Box Stand

Technical specification:

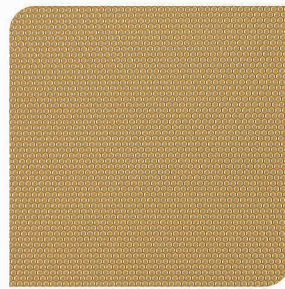
Input power:	110V - 230V 50/60Hz
Max. power consumption:	150 VA
Illuminating LED lamp power:	5W
Table height:	880mm - 980mm
Table-top dimensions:	900mm x 440mm

Dimensions:

Width:	1080mm - 1460mm
Depth:	1500mm
Height:	1810mm
Column chair up/down movement:	250mm
Min/max seat height:	490mm - 690mm



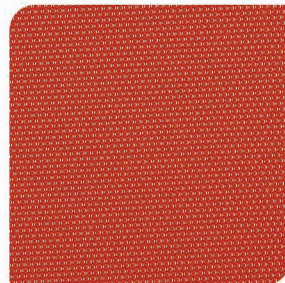
VITA



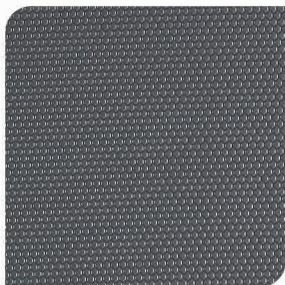
LATTE



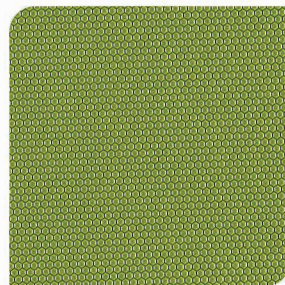
NERO



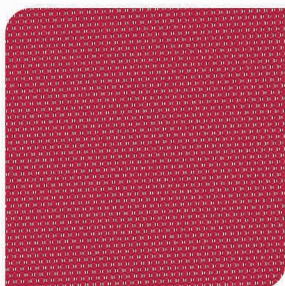
BRUNA



SCURO



MELA



ROSA



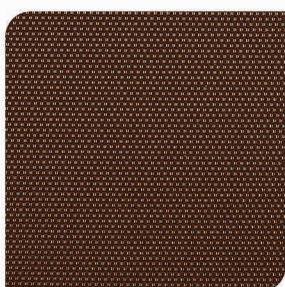
STELLA



AMORE



ZUCCHINI



ESPRESSO



AMALFI



www.mdt.pl

MDT Sp. z o.o.
ul. Skosna 12A
30-383 Krakow

tel.: +48 12 655 30 65
e-mail: office@mdt.pl