



MDT (est. 1998) is a reputable manufacturer and supplier of the ophthalmic devices, accessories and consumables (including: BioGlo - Fluorescein Sodium Ophthalmic Strips and TearFlo - Schirmer's Test Strips). Thanks to our experience and sustainable development, we are able to meet growing requirements by offering a wide range of functional products for Ophthalmologists.

We manufacture ophthalmic surgical tables, operator's chairs, ophthalmic units, electrical ophthalmic tables, as well as devices used for diagnostics and treatment of strabismus, which are proudly CE & 'made in EU' marked.

Thanks to our commitment to Ophthalmology, excellent Business Partners, a long-lasting presence in the global market, continuous investments in research and development, as well as the team of devoted employees, we are able to meet growing requirements by offering a wide range of high-quality products and services.

We are proud of our Service Engineers and Business Partners who provide customers with an outstanding level of technical support, both at the stage of equipment installation and in case of any issues appearing during product life-time. The satisfaction of the customers is of utmost importance to us, therefore we take into consideration your advice and opinions, while striving to meet the challenges and expectations we encounter.

We welcome you to acquaint yourselves with our product portfolio. In case of any questions we are at your disposal.

MDT Ophthalmic Equipment Manufacturer.

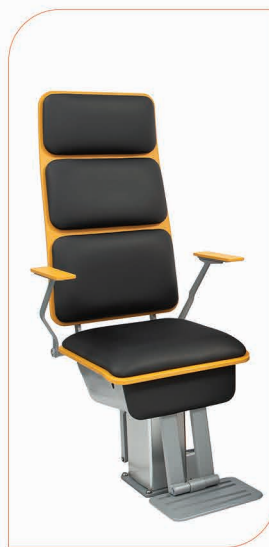
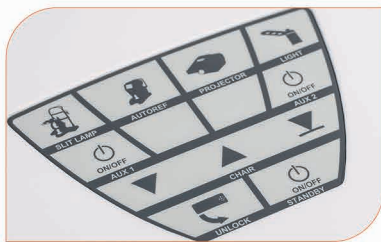
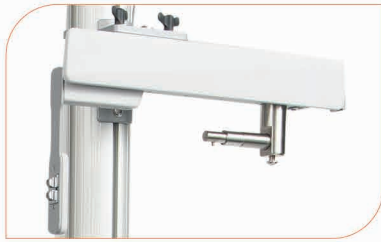


Ophthalmic Unit

Easy

Excellent quality and smart design at reasonable price





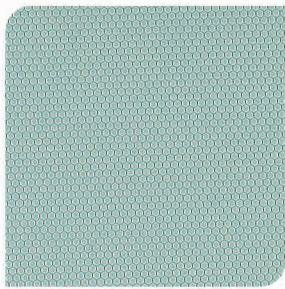
- Two instruments translating table-top
- Autoref / slit lamp built-in power supply
- Adjusting knobs of a slit lamp illumination mounted on the table-top
- Electrically elevated patient chair
- Easy right or left handed set-up
- Aluminum column (with illumination lamp, chart projector mounting and phoropter arm)
- Linear or spring phoropter arm (optional)
- Wide selection of upholstery colours (optional)
- CBS-1000 Control Box Stand

Technical specification:

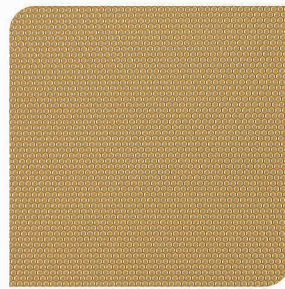
| | |
|------------------------------|---------------------|
| Input power: | 110V - 230V 50/60Hz |
| Max. power consumption: | 150 VA |
| Illuminating LED lamp power: | 5W |
| Table height: | 875 mm |
| Table-top dimensions: | 434mm x 840mm |

Dimensions:

| | |
|--------------------------------|----------------|
| Width: | 1255mm -1627mm |
| Depth: | 1920mm |
| Height: | 1731mm |
| Column chair up/down movement: | 250mm |
| Min/max seat height: | 423mm - 623mm |



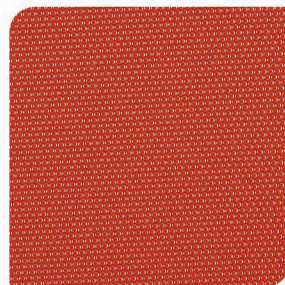
VITA



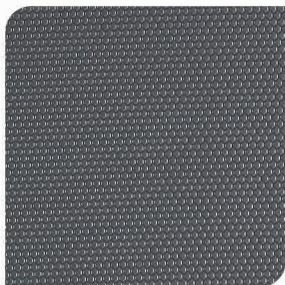
LATTE



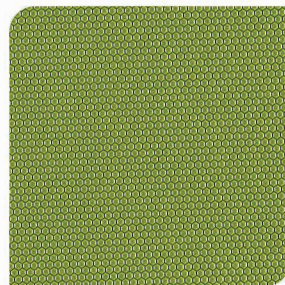
NERO



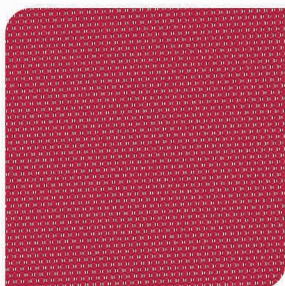
BRUNA



SCURO



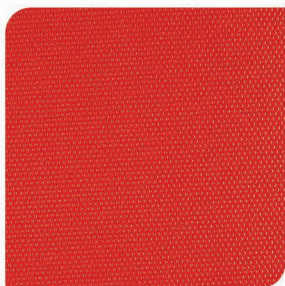
MELA



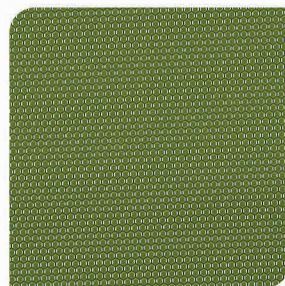
ROSA



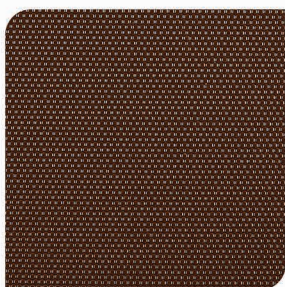
STELLA



AMORE



ZUCCHINI



ESPRESSO



AMALFI



www.mdt.pl

MDT Sp. z o.o.
ul. Skosna 12A
30-383 Krakow

tel.: +48 12 655 30 65
e-mail: office@mdt.pl